



Offenburg University University of Applied Sciences



Offenburg University of Applied Sciences was founded in **1964** as a school of engineering (polytechnic). Today, the university has 2 main campuses. **4,500** students (12 % international students) are enrolled in 27 Bachelor and 23 Master programs assigned to 4 departments. The university has **50 labs** for study and research and seven designated research institutes.



Offenburg University

- Campus Offenburg

- Technology and Media



- Campus Gengenbach

- Business Administration and Industrial Engineering





Offenburg University of Applied Sciences

Exchange Details

Information and services for incoming students:

<https://incoming.hs-offenburg.de/en/exchange-students/>

Electrical- and Information Engineering:

3 exchange positions (each 10 months)

Exchange Purposes: Study, Internship, Thesis

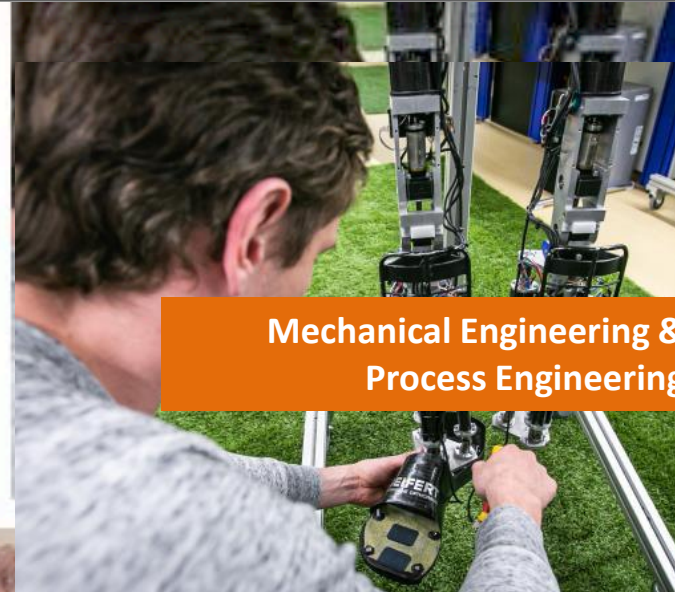
Teaching languages: English (B1), German (B1)



Offenburg University of Applied Sciences – Departments



Electrical Engineering, Medical
Engineering & Computer Science



Mechanical Engineering &
Process Engineering



Media



Business Administration &
Industrial Engineering



Offenburg University of Applied Sciences – Research Institutes

- Institute for Energy Systems Technology (INES)
- Institute for Unmanned Aerial Systems (IUAS)
- Peter Osypka Institute for Pacing and Ablation (POI)
- Institute for Reliable Embedded Systems and
Communication Electronics (ivESK)
- Institute for Sustainable Silicate Research Offenburg
(NaSiO)
- Institute for Trade and Innovation (IfTI)
- Affective and Cognitive Institute (ACI)



Offenburg University of Applied Sciences Students' Projects





Offenburg University of Applied Sciences High-Frequency and EMC Lab

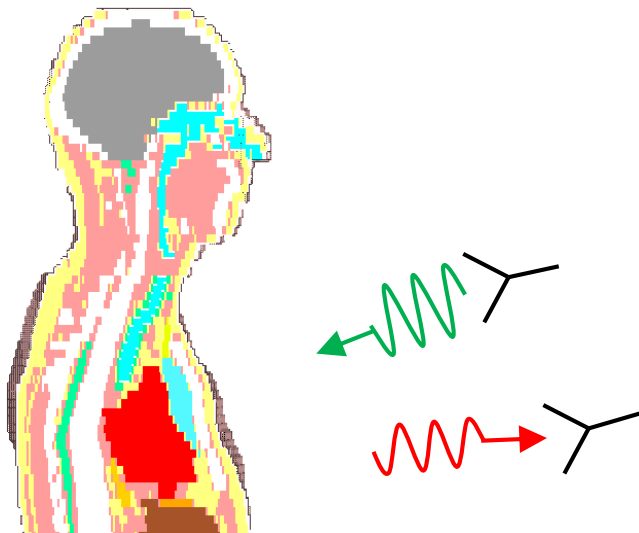


Distance Measurement with Radar



Automotive Radar

Research Topics



Microwave Medical Imaging



Offenburg University of Applied Sciences Rankings, Awards & Memberships





www.hs-offenburg.de/en



Exchange Responsible:
Alessandra Costanzo
alessandra.costanzo@unibo.it